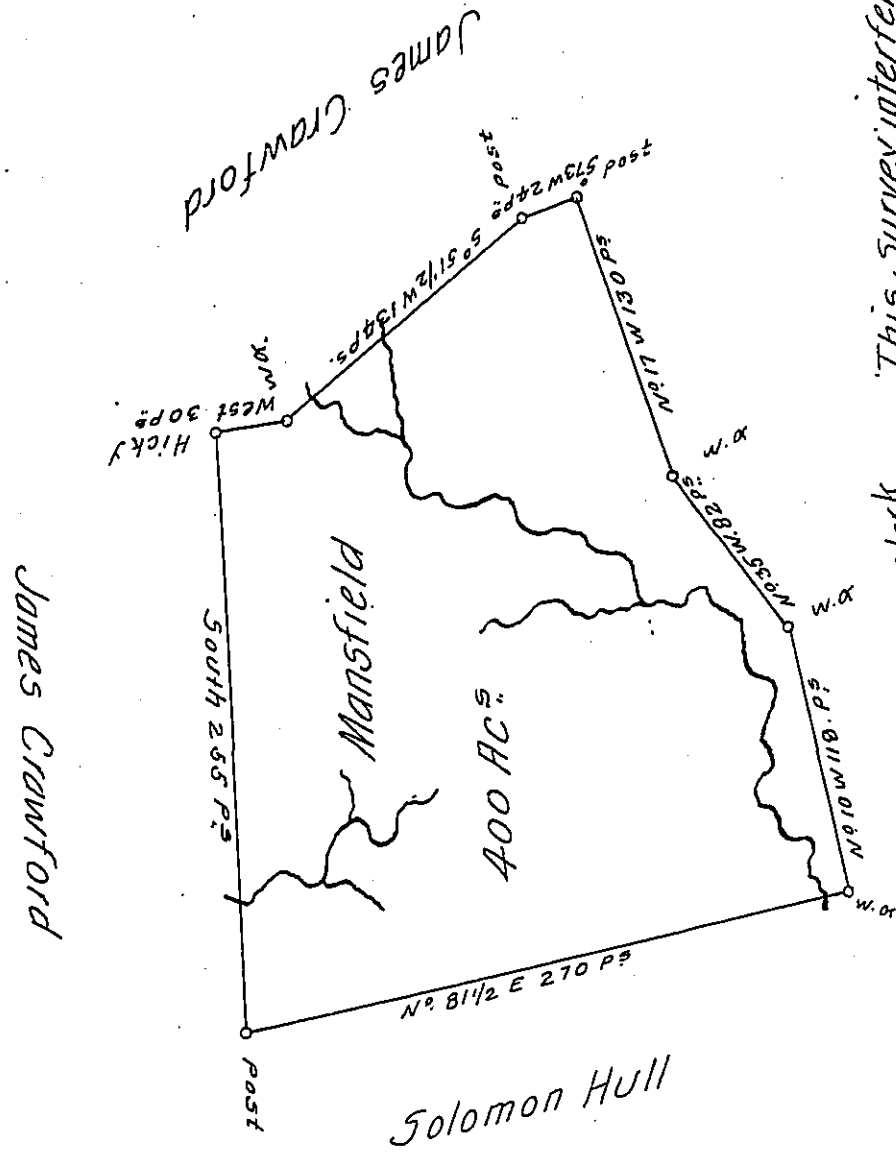


Entd 18th Feb'y 1780
Retd 28 Sept'r 1789



A Draught of a Survey called "Mansfield" situate on the Waters of Kings Creek in Washington County. Contain 400 Ac^s strict Measure, executed March ye 18th 1786 in Consequence of a Certifⁱ for 400 Ac^s granted to Ge^o M^o Carmick (Ass^{ee} of Peter Manon) by the Virginia Commiss^{rs} and duly entered with the County Surv^r &c

Jno^o Lukens Esq^r S. Gen^l

Presley Nevill }
 Math^w Ritchie } D. S^r

IN TESTIMONY that the above is a copy of the original remaining on file in the Department of Internal Affairs of Pennsylvania, made conformably to an Act of Assembly approved the 16th day of February, 1833, I have hereunto set my Hand and caused the Seal of said Department to be affixed at Harrisburg, this first day of April 1908.

Henry Howell
 Secretary of Internal Affairs.